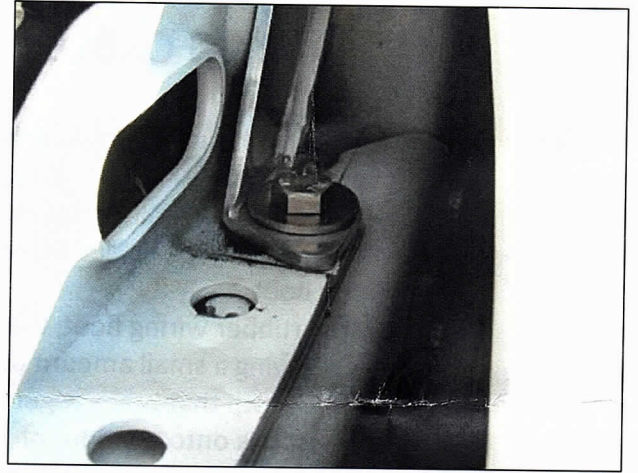
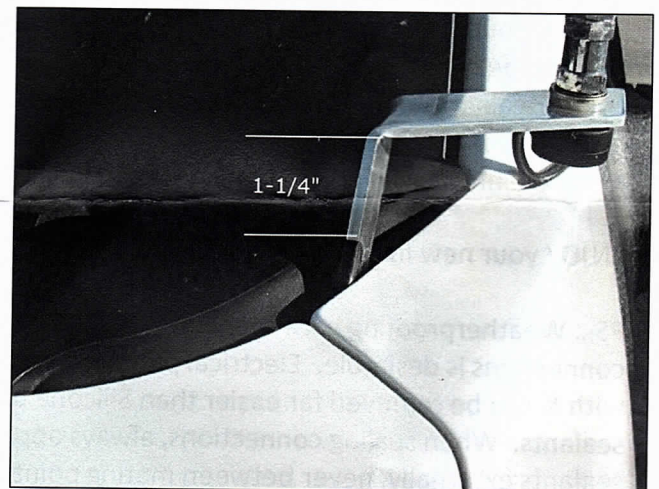
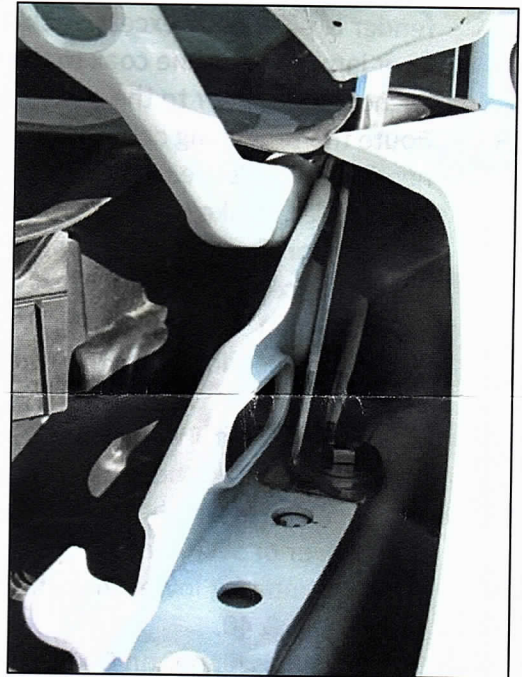


# INSTALLATION INSTRUCTIONS FOR FORD HOOD GROOVE MOUNT



1. Pop your hood. Remove the driver side bolt located at the rear of the hood hinge. This bolt is located closest to the windshield & requires the use of a  $\frac{1}{2}$ " / 13 mm wrench. Save this bolt in your glove compartment.
2. For optimal grounding, we recommend at least scuffing if not fully removing the paint from underneath where the bolt was seated. Achieving a clean metal to metal contact at this point is **critical**.
3. Wipe antenna mount down with glass cleaner, removing any dust or oils from handling. Attach the rubber protection pad so that it wraps around both sides on the front of the riser. The top of the pad should be located  $1\frac{1}{4}$ " down as measured from the bottom side of the antenna platform. Pay attention to which side of the mount will be aimed forward before attaching.
4. Pull back rubber cowl seal\*. Starting horizontally with the short end facing down, slip the mount down & into the groove between the fender & the cowl, dropping it straight down from the top. This is much easier than trying to work the mount in from the front.
5. Install the supplied  $\frac{1}{2}$ " / 13 mm bolt & washer, making sure that the mount is straight & not twisted. When properly installed, the mount runs vertically parallel to & is braced by the hinge. Make sure the bolt is securely tightened.



\* Rubber cowl boot can either be folded down behind the antenna mount or slot cut / notched to fit around the mount accordingly.